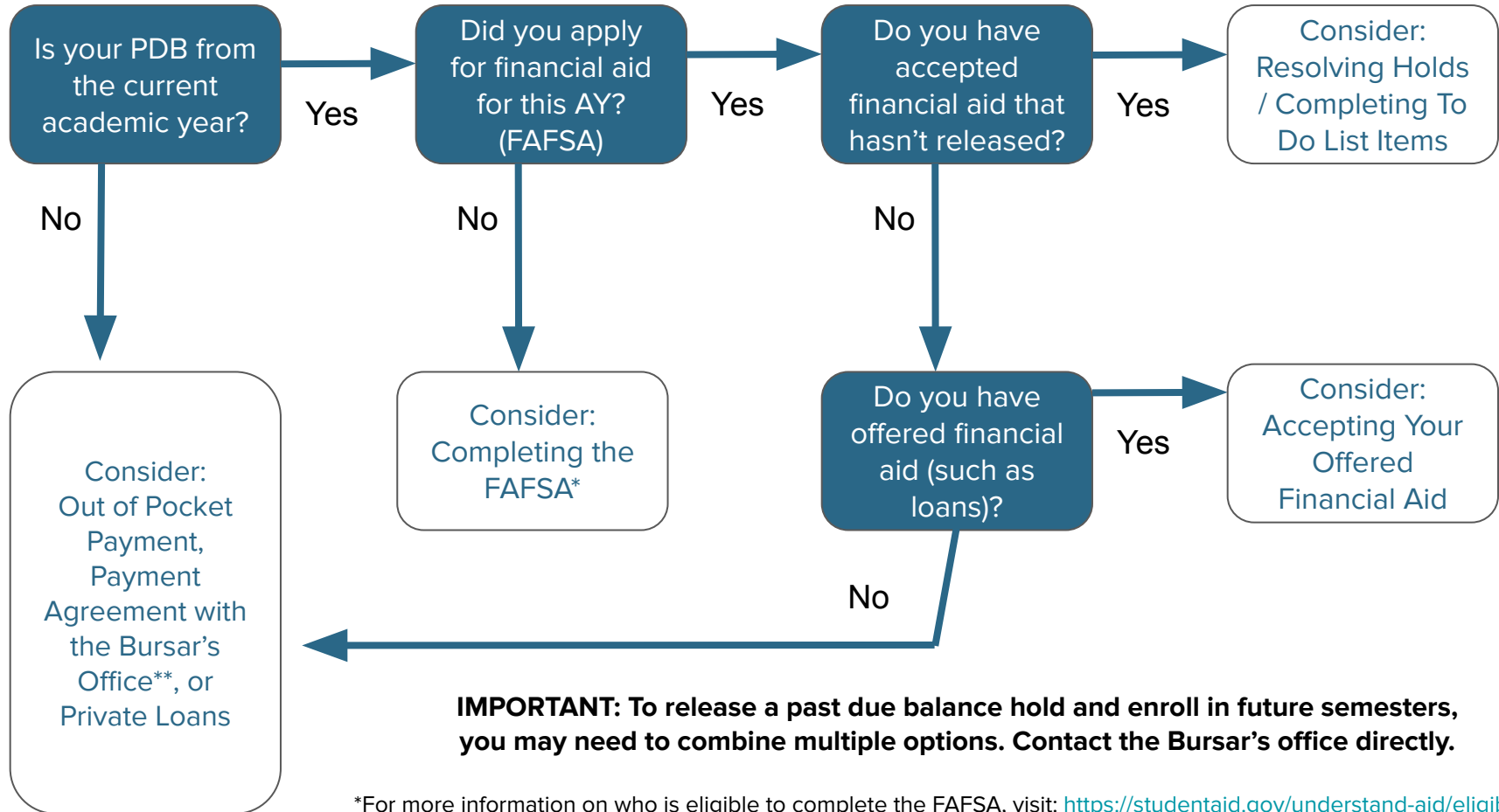


Past Due Balance Decision Tree

Start Here



IMPORTANT: To release a past due balance hold and enroll in future semesters, you may need to combine multiple options. Contact the Bursar's office directly.

*For more information on who is eligible to complete the FAFSA, visit: <https://studentaid.gov/understand-aid/eligibility>

**Payment Agreement available for students who are no longer enrolled